

Email Setup for Outlook 2010

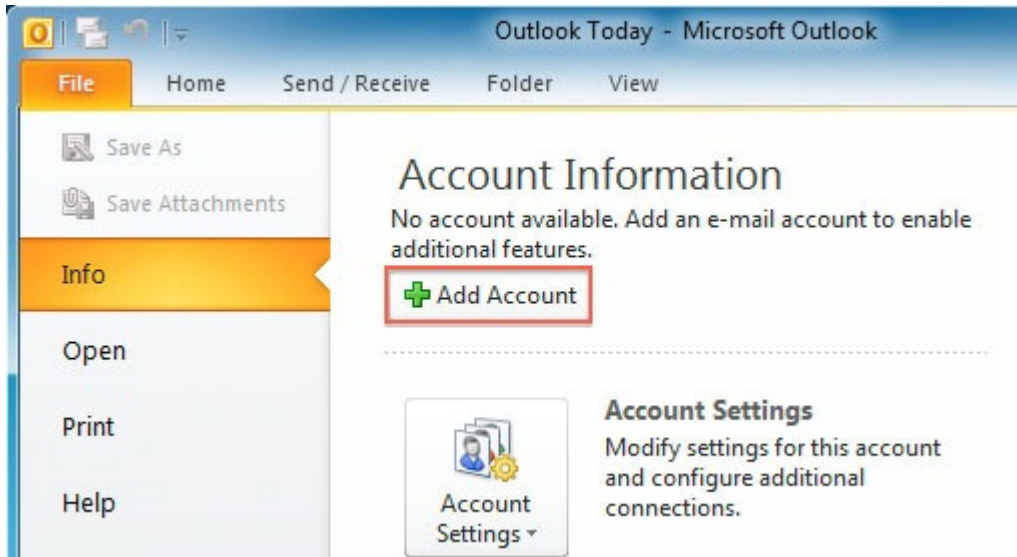
Follow the steps listed below to configure Microsoft Outlook 2010 email client.

Step 1

Open Microsoft Outlook 2010.

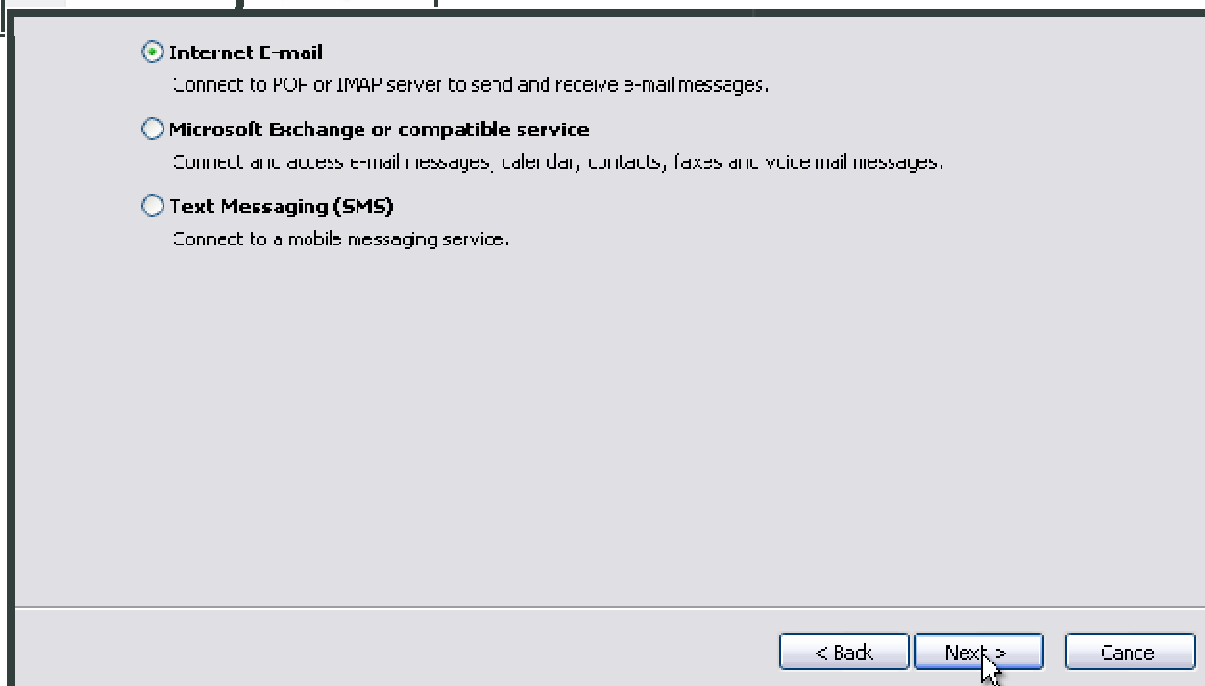
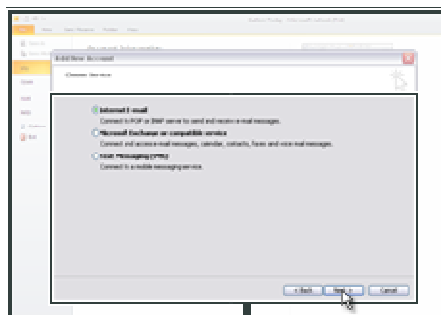
Step 2

Click on [File](#) and then [Add Account](#).



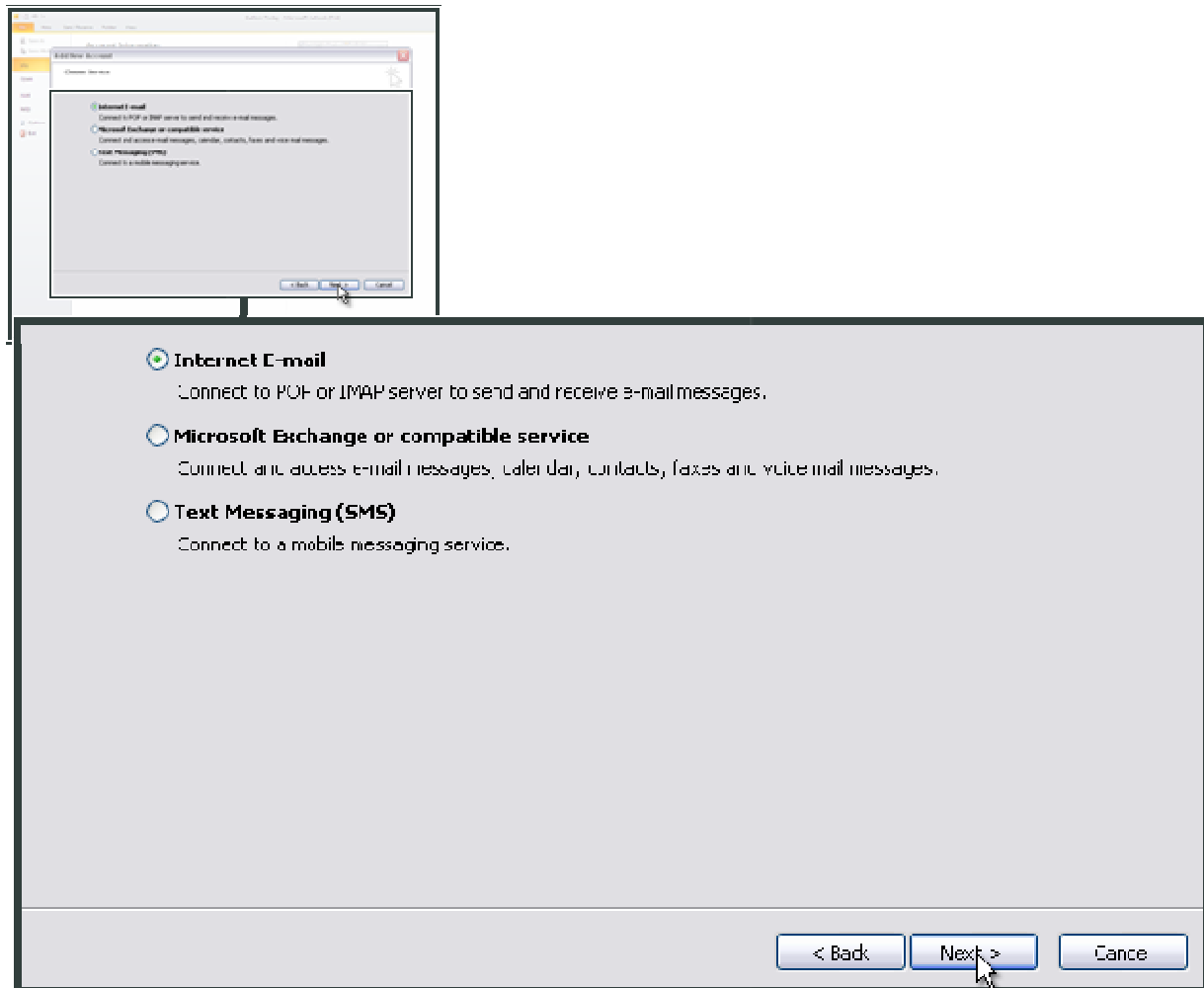
Step 3

On the New Account screen, click the [Manually configure server settings](#) radio button and click [Next](#).



Step 4

Select [Internet E-mail](#) and click [Next](#).



Step 7

Enter your name and email address in [User Information](#).

Step 8

Select [Account Type](#) as POP3 or IMAP.

Step 9

In the [Incoming mail server](#) field enter mail.yourdomain.com
In the [Outgoing mail \(SMTP\)](#) field enter mail.yourdomain.com
(If your domain name is testdomain.net, then you would put mail.testdomain.net).

Step 10

Enter your user name and password in [Logon Information](#).

Add New E-mail Account

Internet E-mail Settings
Each of these settings are required to get your e-mail account working.

User Information

Your Name: Test DreamSoft

E-mail Address: test@dreamsoftindia.com

Server Information

Account Type: POP3

Incoming mail server: mail.dreamsoftindia.com

Outgoing mail server (SMTP): mail.dreamsoftindia.com

Logon Information

User Name: test-mail.dreamsoftindia

Password: *****

Remember password

Require logon using Secure Password Authentication (SPA)

Test Account Settings

After filling out the information on this screen, we recommend you test your account by clicking the button below. (Requires network connection)

Test Account Settings ...

More Settings ...

< Back Next > Cancel

Step 11

Click [More Settings](#).

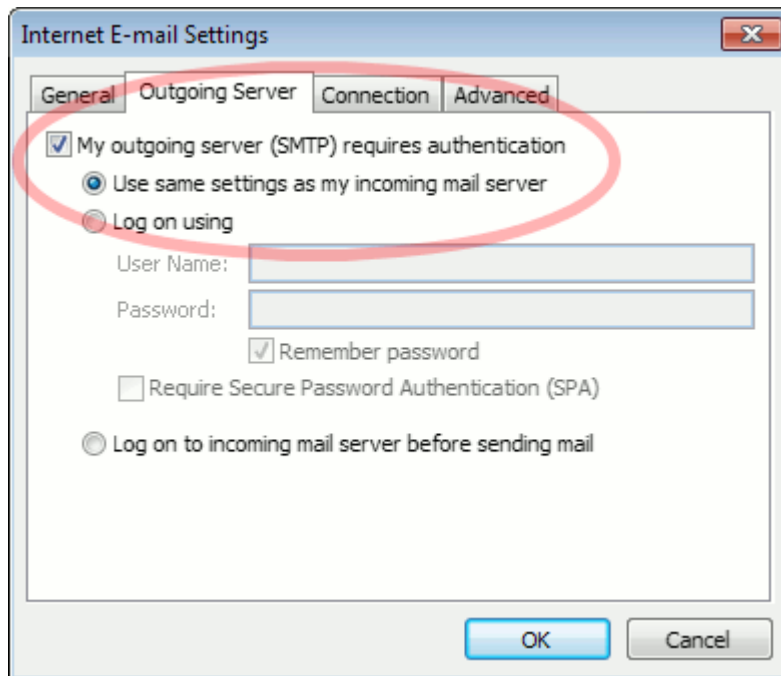
Step 12

Click on [Outgoing Server](#).

Step 13

Select the [My outgoing server \(SMTP\) requires authentication](#) checkbox.

Make sure that [Use same settings as my incoming mail server](#) is selected and then click **OK**.



Step 14

Click the [Advanced](#) tab at the top.

Step 15

[Use the following type of encrypted connection](#) should be selected as NONE.

Step 16

Set [Outgoing mail server](#) port to 25 or 2525 or 587.

Step 17

Click [OK](#) button.

