



VOICE ALARM APPLICATION



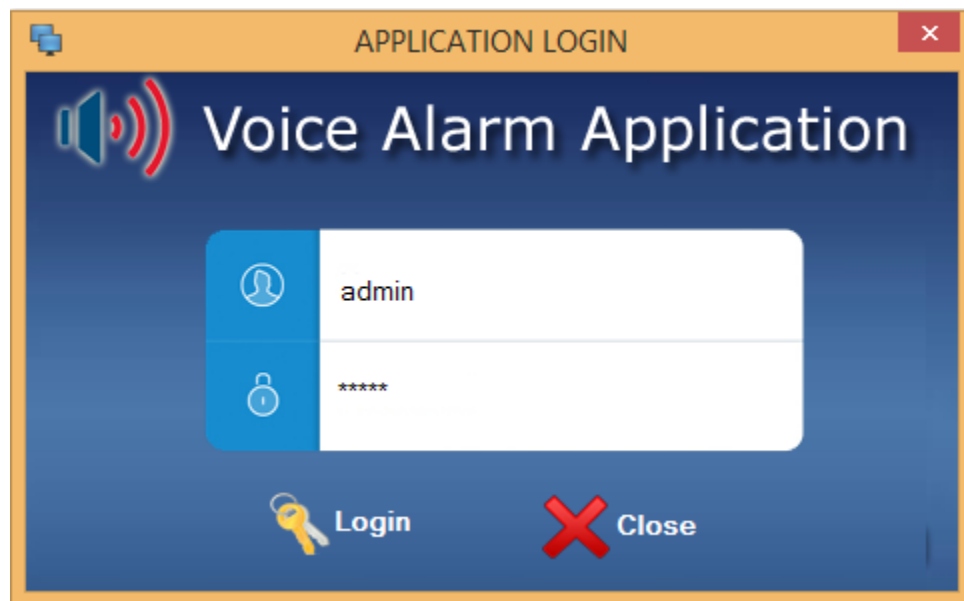
1. Activation Screen



1. **Activate:** Click on activate to activate the license version of the application.
2. **Continue Demo:** Click on continue Demo to run the demo version of application.

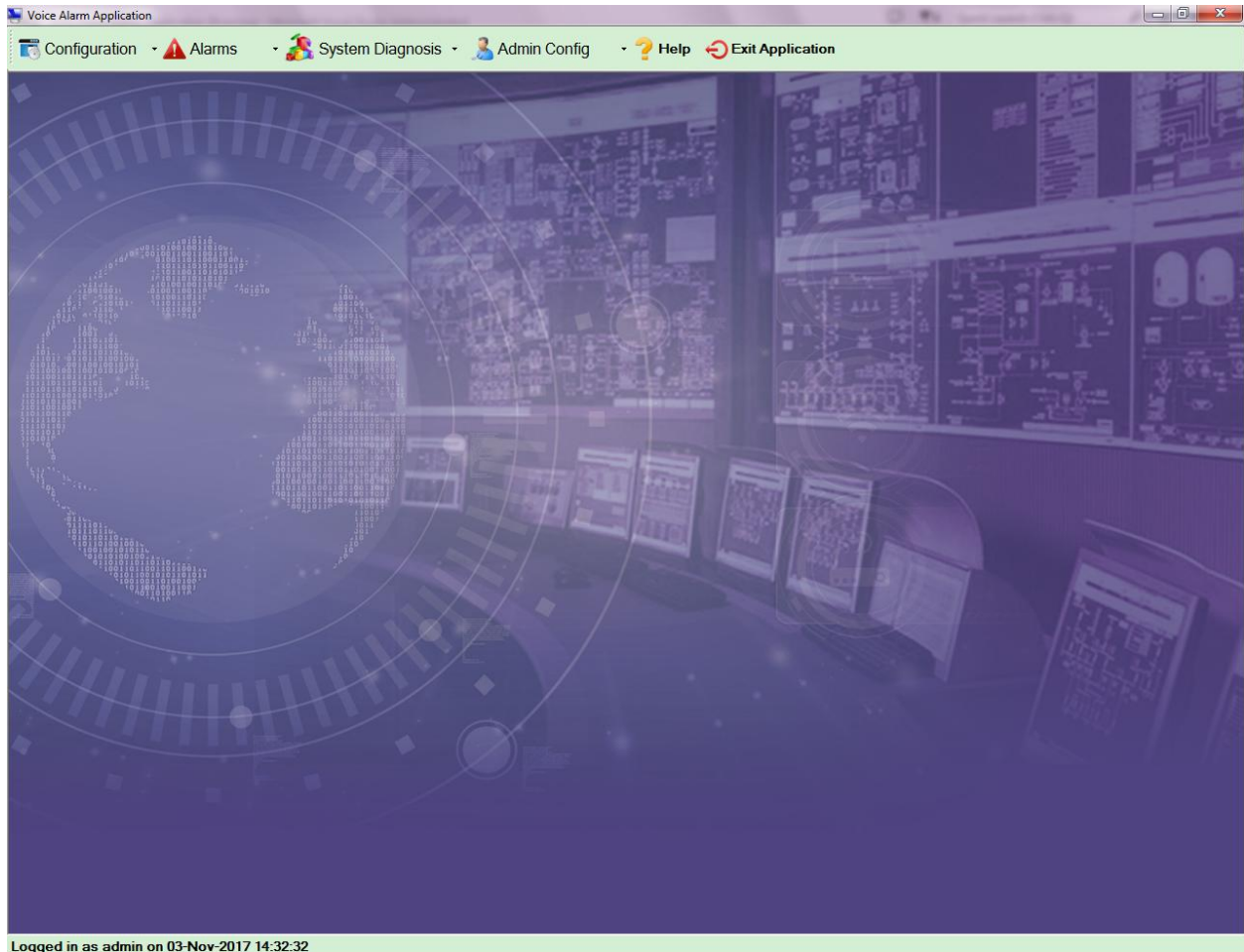
2. Login Screen

Enter the appropriate id and password and then click on login button.



NOTE: BY DEFAULT, ID WILL BE “admin” AND PASSWORD WILL BE “admin”.

3. Home Screen

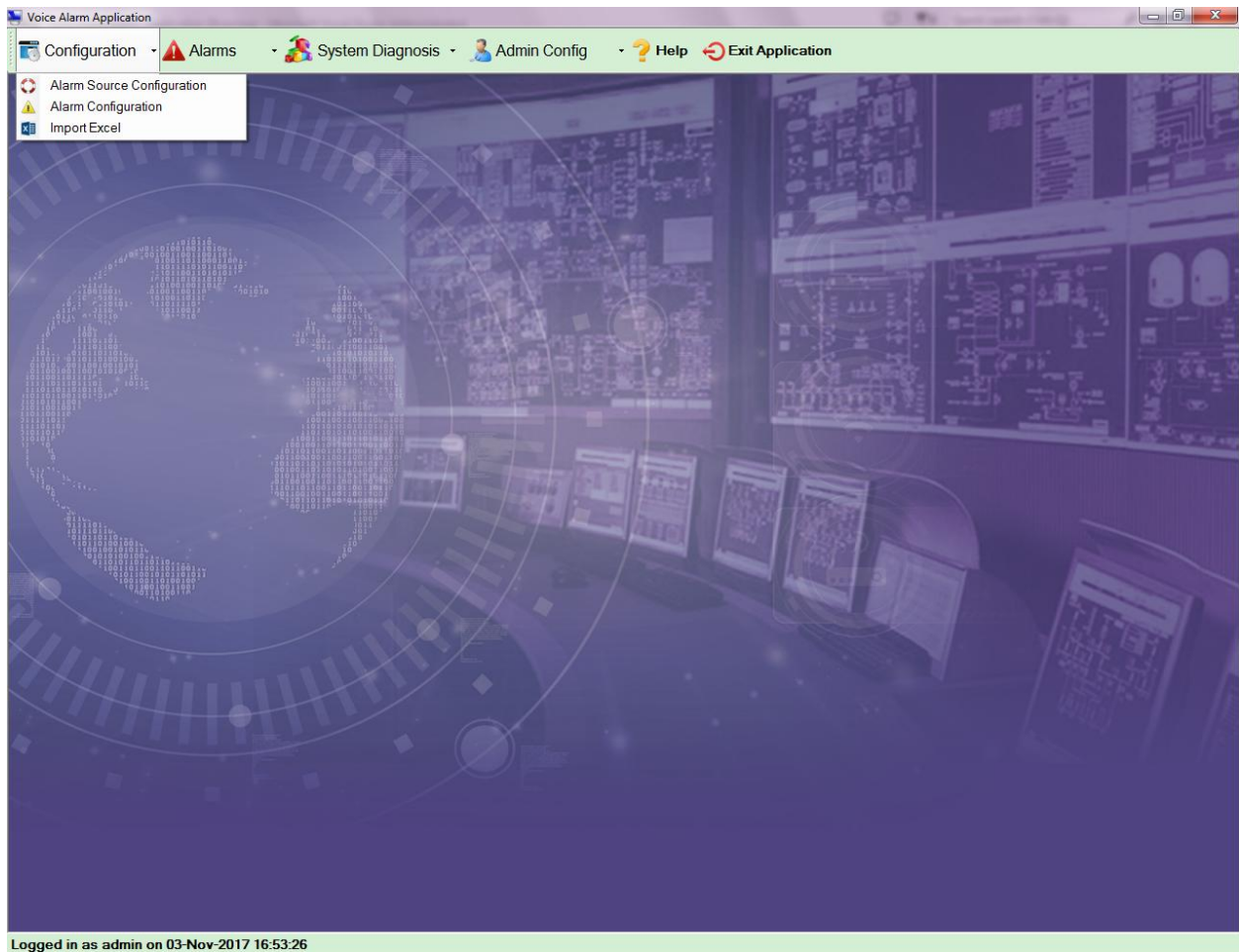


1. **Configuration:** It is used for setting voice alarm configuration. It has the following menu items:
 - a. Alarm Source Configuration
 - b. Alarm Configuration
 - c. Import Excel
2. **Alarm:** It is used to get the details of the alarm logs and pending alarms. It has the following menu items:
 - a. Alarm Logs
 - b. Pending Alarm
3. **System Diagnosis:** It is used to diagnose the system for testing and monitoring. It has the following menu items:
 - a. Audio Testing
 - b. Application Diagnosis
 - c. Tag Monitoring

4. **Admin Config:** It is used for the admin configuration settings like backup or restore database etc. It has the following menu items:
 - a. Application User
 - b. Backup Database
 - c. Restore Database
 - d. Data Deletion
5. **Help:** It will help you with the usage of application by opening the help file.
6. **Exit Application:** It will exit the application.

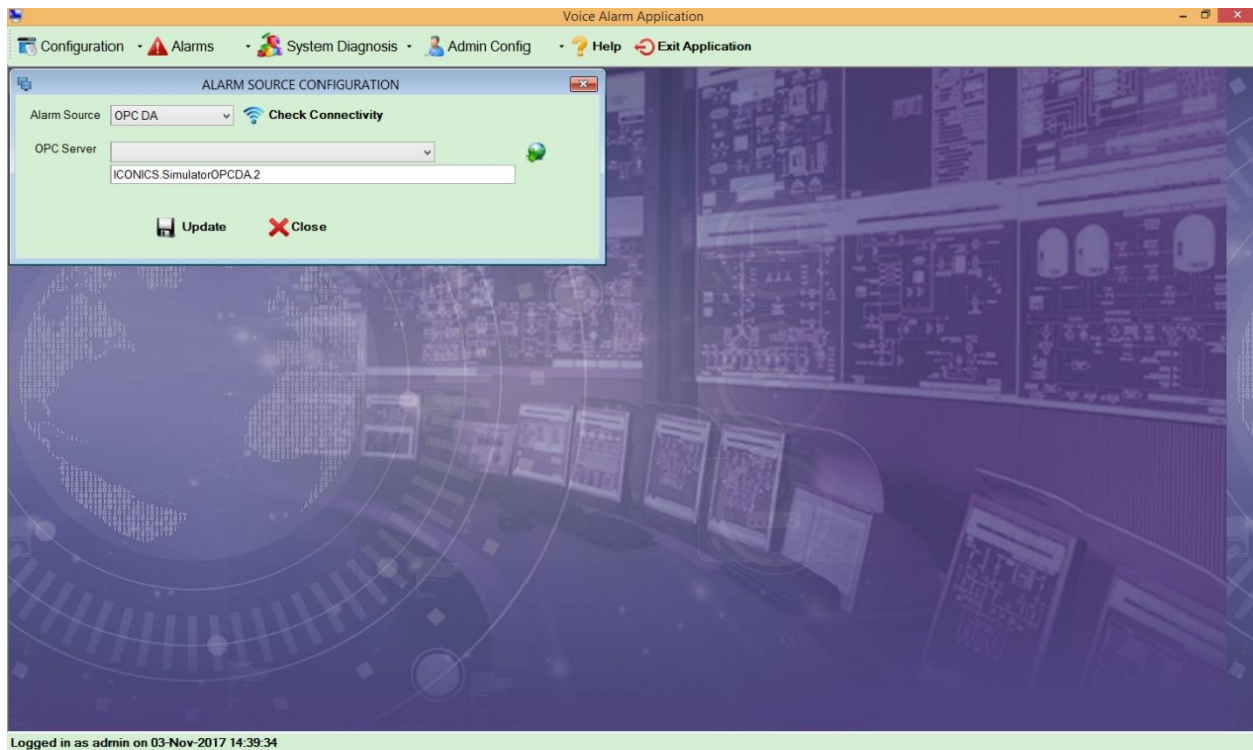
4. Configuration Menu Items


Click on Configuration to view its menu items




1. **Alarm Source Configuration:** It is used for connecting to the OPC Servers.
2. **Alarm Configuration:** It is used for alarm configuration settings i.e. for adding tags manually.
3. **Import Excel:** It is used for importing excel file which consist of multiple tags.

1. Alarm Source Configuration

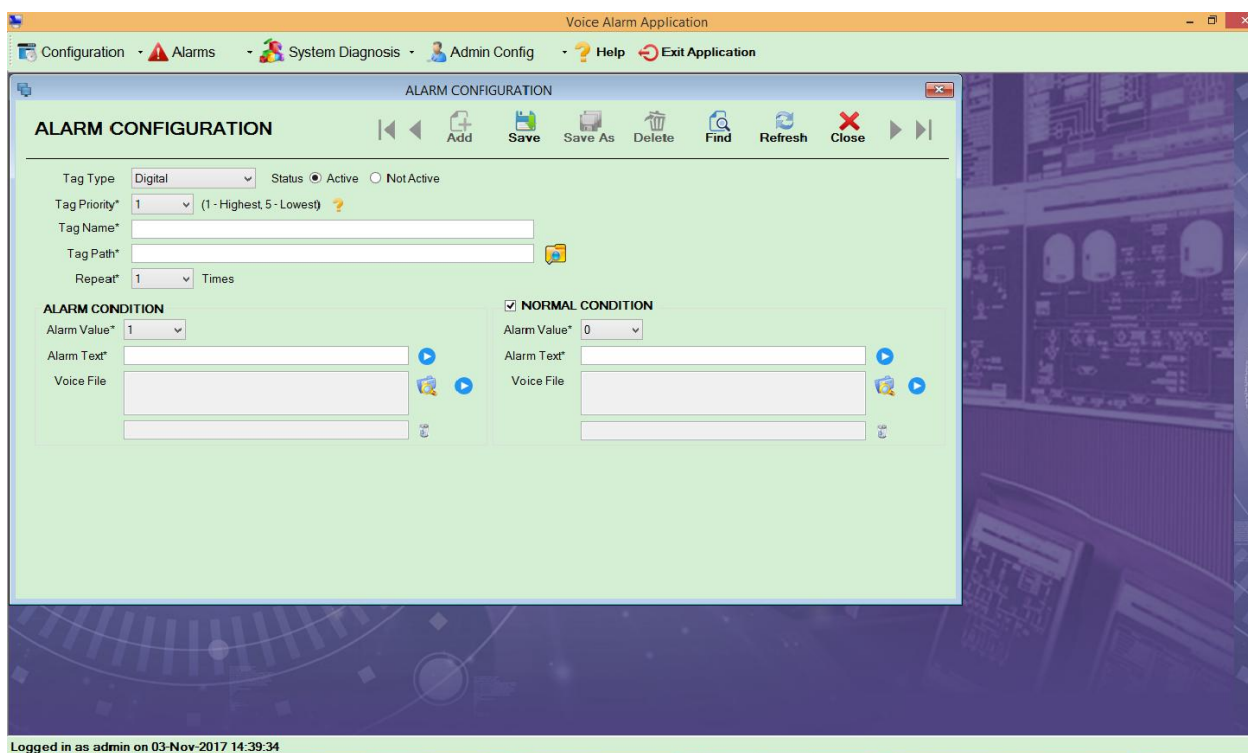


1. **Alarm Source:** It consists of following types of OPC:
 - a. **OPC DA:** OPC Data Access
 - b. **OPC UA:** OPC Unified Architecture
 - c. **OPC AE:** OPC Alarm & Event
2. **Check Connectivity:** To check the connectivity of OPC Server, Click on Check Connectivity.
3. **OPC Server:** To populate the OPC Servers Click on  icon, Select the appropriate OPC Server from the dropdown.
4. **Update:** After Configuring all details and checking connectivity, Click on Update button which will update all the details.
5. **Close:** Click on close to close the screen.

2. Alarm Configuration

1. **Tag Type:** Select Tag Type from the dropdown i.e. either digital or analog. If Digital Tag Type selected, then digital screen will appear and if analog tag is selected then analog screen will be appear with high and low conditions.
2. **Status:** Select the status whether active or not active. If tag is not in used, then the tag can be made not active.
3. **Tag Priority:** Select the tag priority from 1-5, 1 mean highest and 5 means lowest.
4. **Tag Name:** Enter the tag name.
5. **Tag Path:** Enter the tag path or click on  button to browse the path.
6. **Repeat:** Select the number of repetitions for the voice alarm from 1-15 i.e. if repetition is selected as 4 then the file will be played 4 times.

If tag type selected as Digital



Voice Alarm Application


Configuration Alarms System Diagnosis Admin Config Help Exit Application

ALARM CONFIGURATION

Tag Type: Digital Status: ☒ Active ☐ Not Active

Tag Priority*: 1 (1 - Highest, 5 - Lowest) ?


Tag Name*



Tag Path* 

Repeat*: 1 Times

ALARM CONDITION


Alarm Value*: 1



Alarm Text* 

Voice File  

☒ NORMAL CONDITION




Alarm Value*: 0



Alarm Text* 

Voice File  

Logged in as admin on 03-Nov-2017 14:39:34

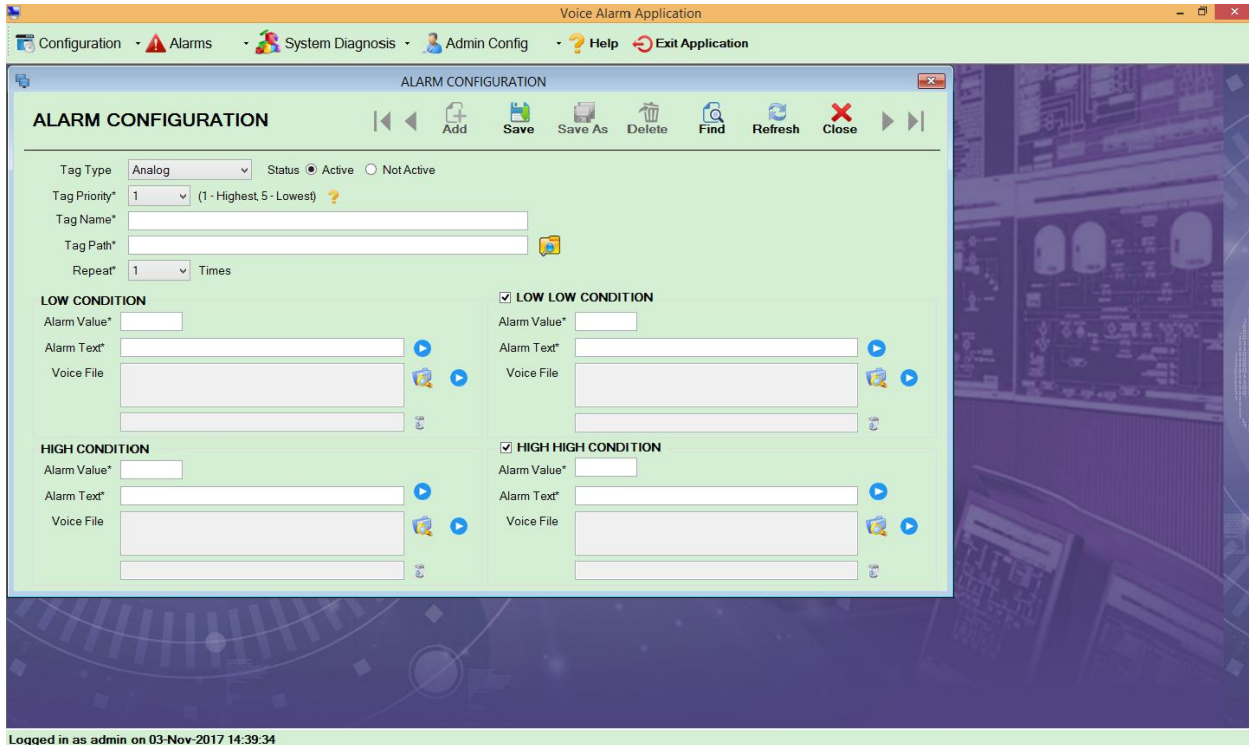
Alarm Condition: It specifies when alarm value will be high

1. **Alarm value:** Select the alarm value from 0 or 1.
2. **Alarm Text:** Enter the alarm Text and click on  to play the voice file.
3. **Voice File:** Click on  to browse voice file and then click on  to play the voice file.

4. **Voice File Deletion:** In order, to play previous voice alarm, click on  and to delete the selected file click on 

Normal Condition: It specifies when alarm value is low. If it is not checked, then voice alarm file will not play in normal condition.

If Tag Type Selected as Analog








Low Condition: It specifies the low condition.

Low Low Condition: It is optional, but its alarm value should be low then low condition alarm value.

High Condition: It specifies the high condition.

High High Condition: It is optional, but its alarm value should be high then high condition alarm value.

1. **Alarm value:** Enter the appropriate alarm value.
2. **Alarm Text:** Enter the alarm Text and click on  to play the voice file.
3. **Voice File:** Click on  to browse voice file and then click on  to play the voice file.

4. **Voice File Deletion:** In order, to play previous voice alarm, click on  and to delete the selected file click on 

Menu



1. **Add:** It is used to add a new voice alarm file.
2. **Save:** It is used to save the file with the tag name mentioned.
3. **Save As:** It is used to save the file as per the new name user wants.
4. **Delete:** It is used to delete the entire tag file.
5. **Find:** It is used to find the previous records.
6. **Refresh:** It is used to reload the entire the screen.
7. **Close:** It is used for closing the screen.
8. **First Record:** Click on it to go to first record.
9. **Last Record:** Click on it to go to last record.
10. **Next Record:** Click on it to view next record.
11. **Previous Record:** Click on it to previous record.

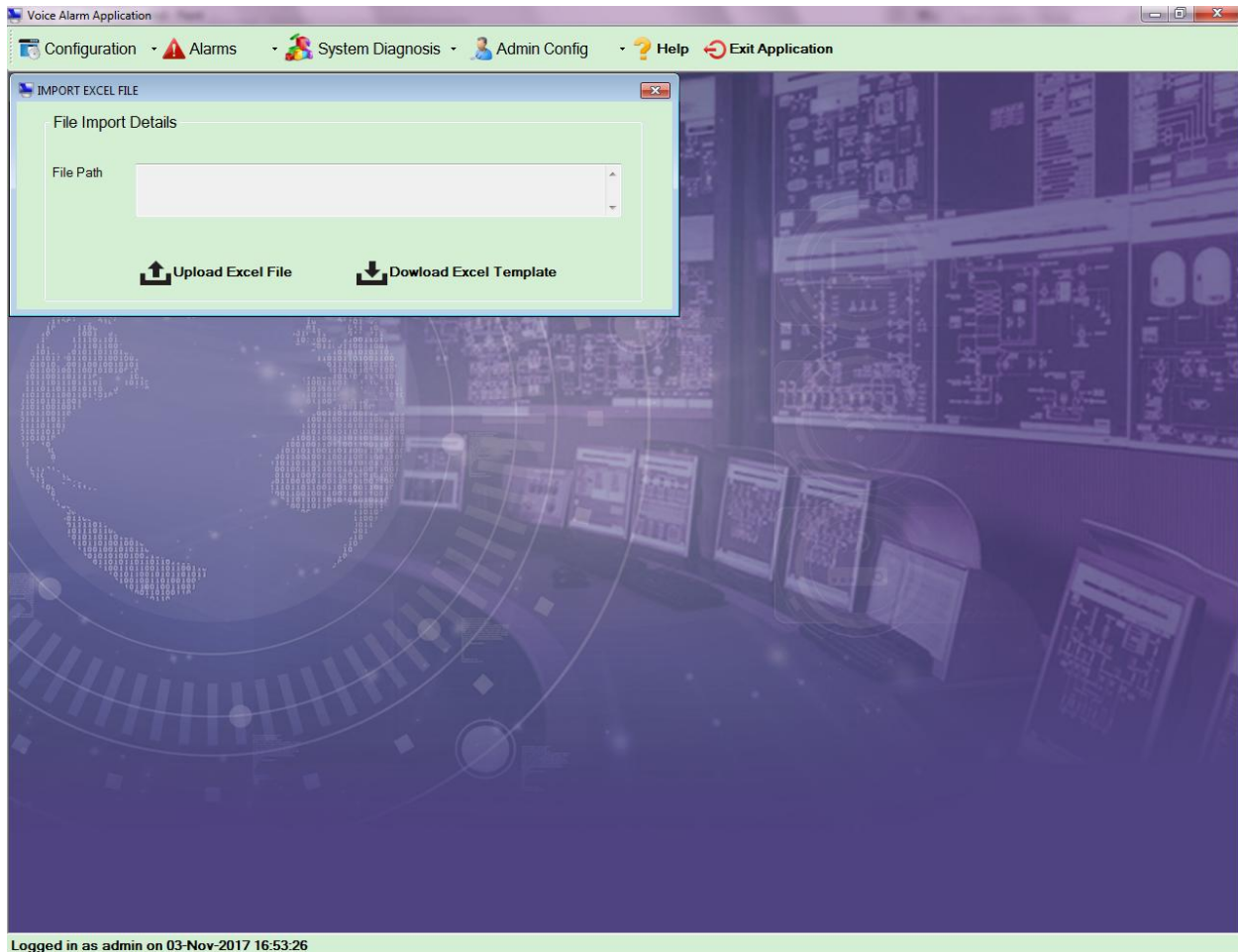
Find Screen

Tag	Tag Name	Tag Path	Priority	Tag
DIGITAL	T1	ns=4;s=TEST_1	1	Active
DIGITAL	T2	ns=4;s=TEST_2	1	Active

1. **Filter:** It is used to filter the search as per the selected filter and the text in the textbox next to it. It has following type of filter:
 - a. Tag Name
 - b. Tag Path
 - c. Status
2. **Search:** Click on search to search the record from grid as per the filter.
3. **Delete:** Click on delete to delete the record.

Select the record from the grid by double click on it, the entire details will be shown in alarm configuration screen.

3. Excel Import

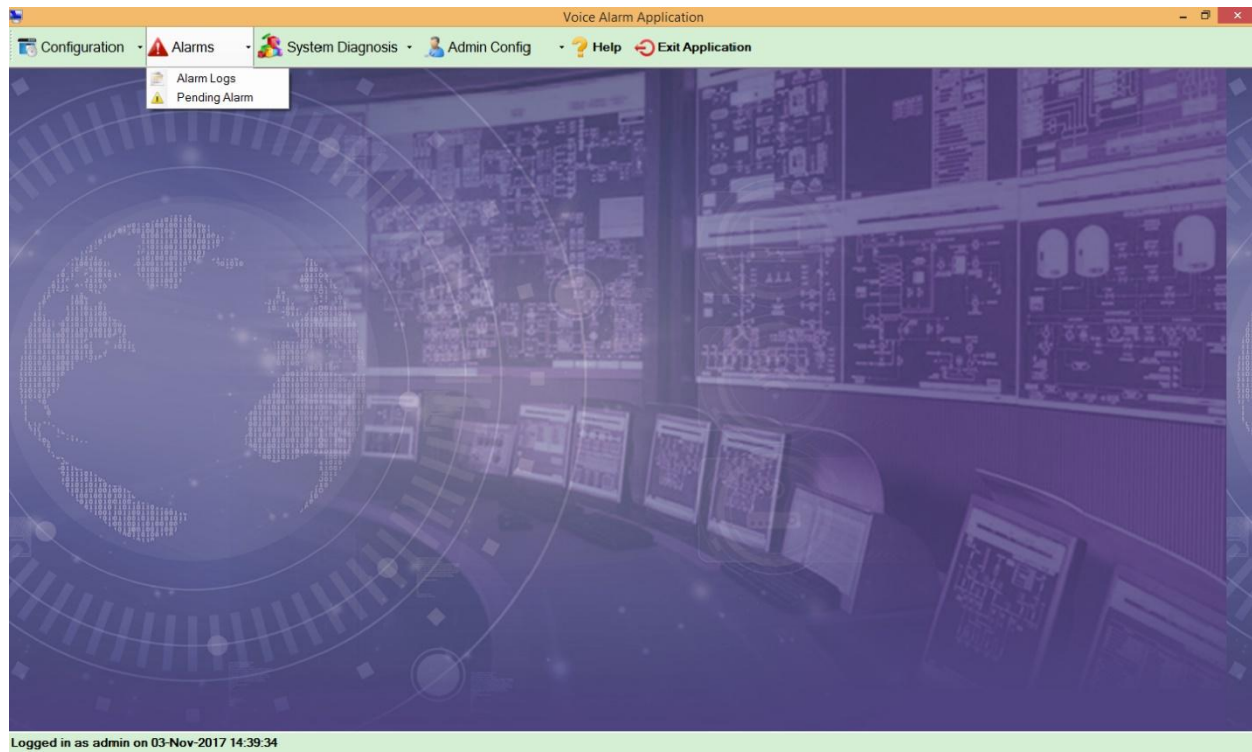


It is used to import the excel file

Download Excel Template: Once clicked on download excel template, it will create a sample excel file at the path specified by the user and it will get open by itself. Enter all the details in opened file only and then save it. Once you close the file, selected file path will appear in the file path field. Click on upload excel file to process the selected file. If File Path is blank, then you can select the path by clicking on Upload Excel.

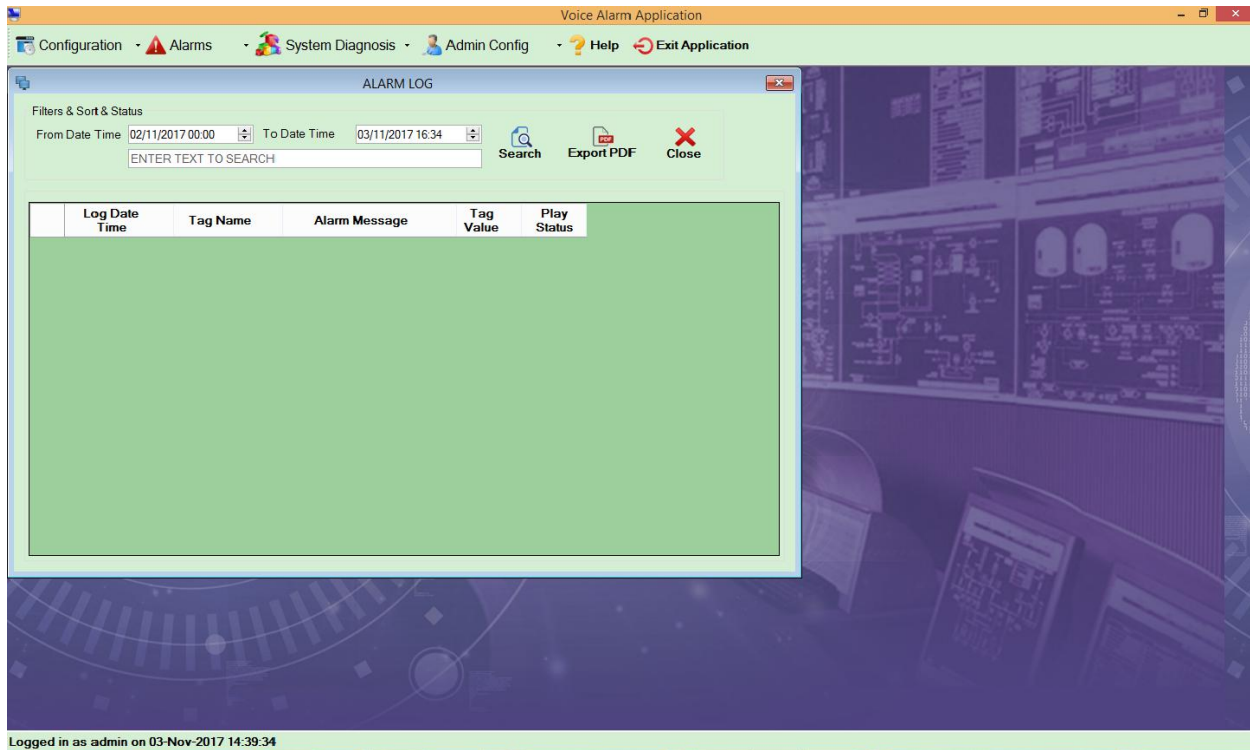
5. Alarm Menu Items

Click on Alarm to view its menu items

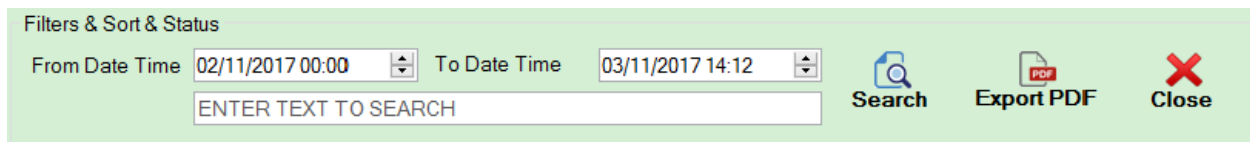


1. **Alarm Log:** It will Display the alarm logs between From date & time - To date & time.
2. **Pending Alarms:** It will display the pending alarm logs.

1. Alarm Log

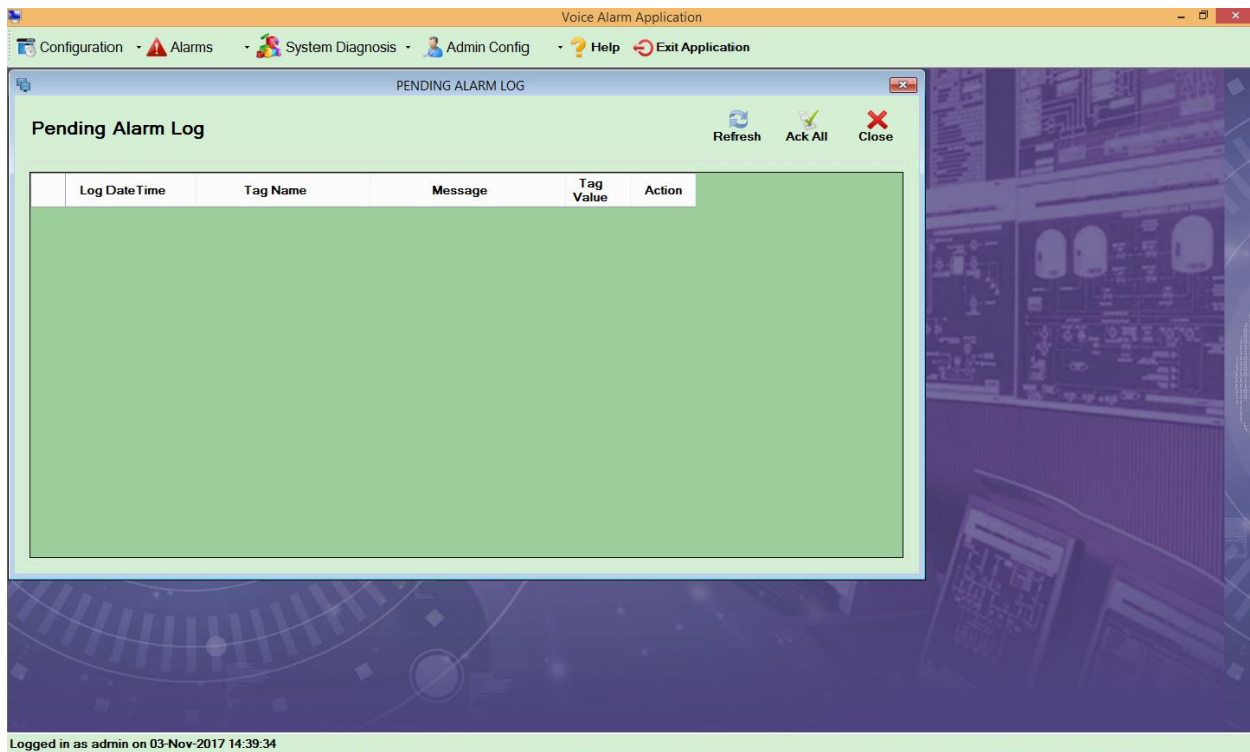


It will display the alarm log information between the From Date & Time – To Date & Time.



1. **From Date Time:** Select the from date time from when you want to view the logs.
2. **To Date Time:** Select the To Date Time till when you want to view the logs.
3. **Search:** Enter the text you want to search and click on search. It will show the data in grid for the searched result.
4. **Export PDF:** In order, to view the whole data in pdf file, click on Export PDF.
5. **Close:** Click on close to close the screen.

2. Pending Alarms

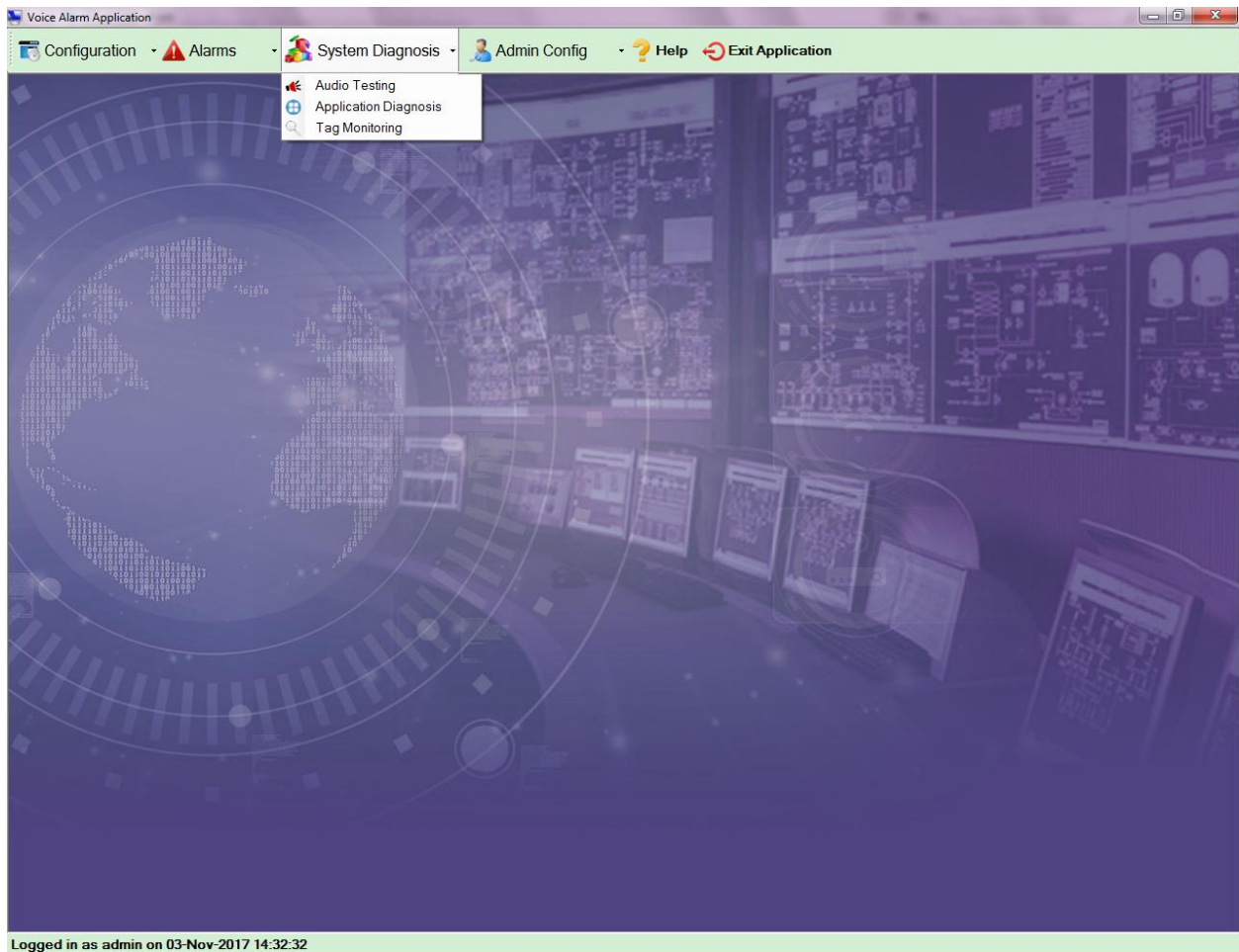


It will display the log information for the pending alarms

1. **Refresh:** Click on refresh to reload the whole data.
2. **Ack All:** Click on Ack All to acknowledge all the logs. Once you acknowledge, its status will be changed to acknowledge.
3. **Close:** Click on close to close the screen.

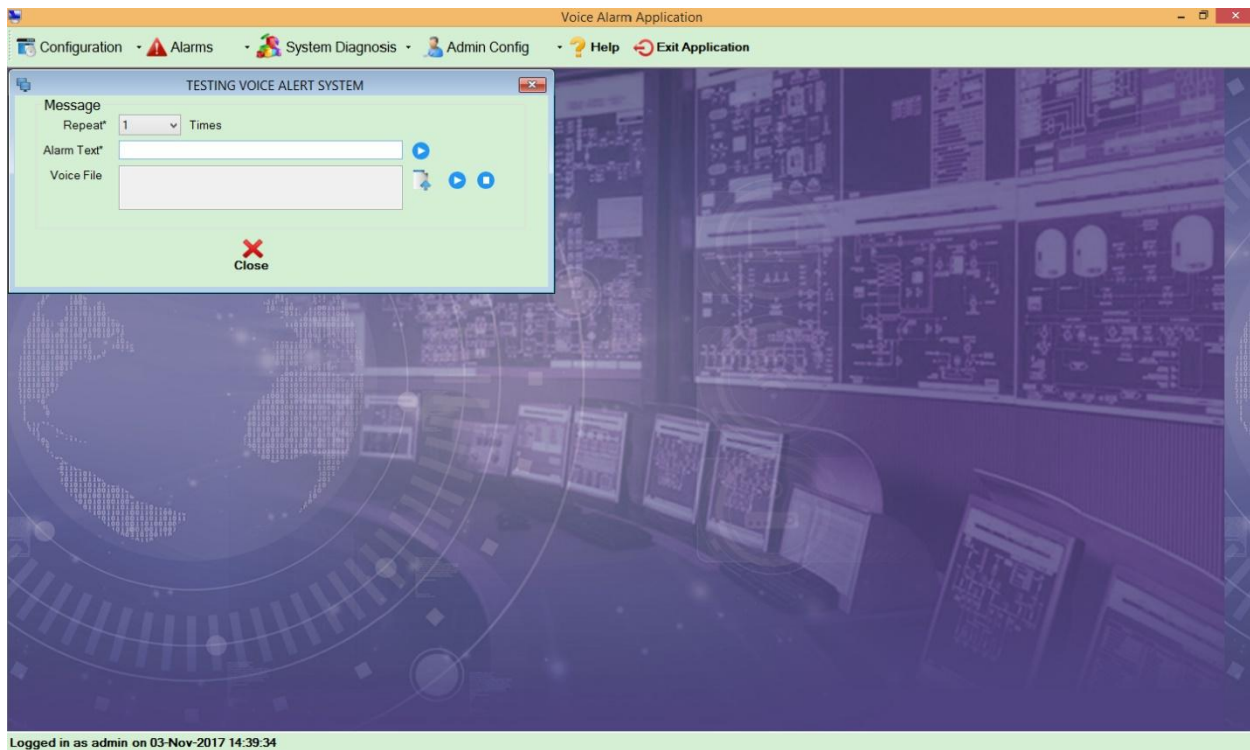
6. System Diagnosis Menu Items

Click on System Diagnosis to view its menu items







1. **Audio Testing:** It is used for the testing of Audio files.
2. **Application Diagnosis:** It will diagnose i.e. show the status of the service.
3. **Tag Monitoring:** It is used to monitor all the tags.

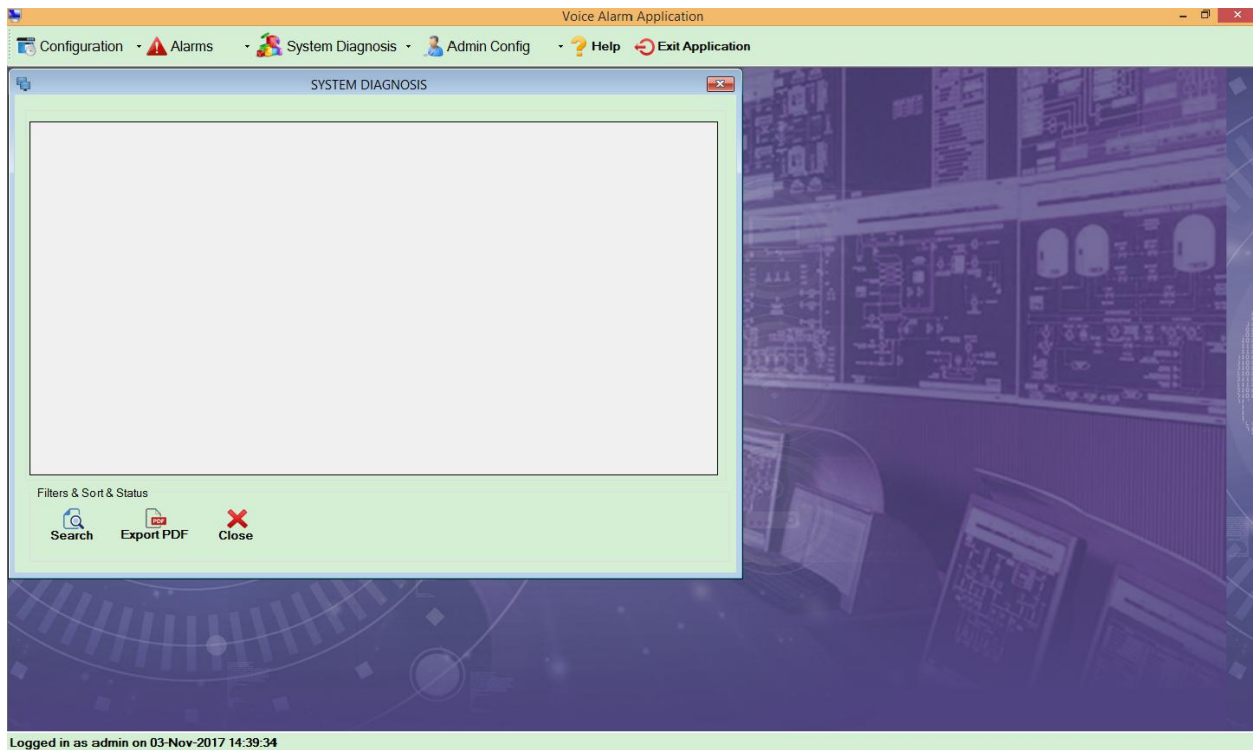
1. Audio Testing



It is used for testing selected audio files

1. **Repeat:** Select the number of repetitions for the voice alarm from 1-15 i.e. if repetition is selected as 4 then the file will be played 4 times.
2. **Alarm Text:** Enter the Alarm Text and click on  to play the alarm text.
3. **Voice File:** Click on  to browse the alarm file and click on  to play the file and if you want to stop then click on 

2. Application Diagnosis

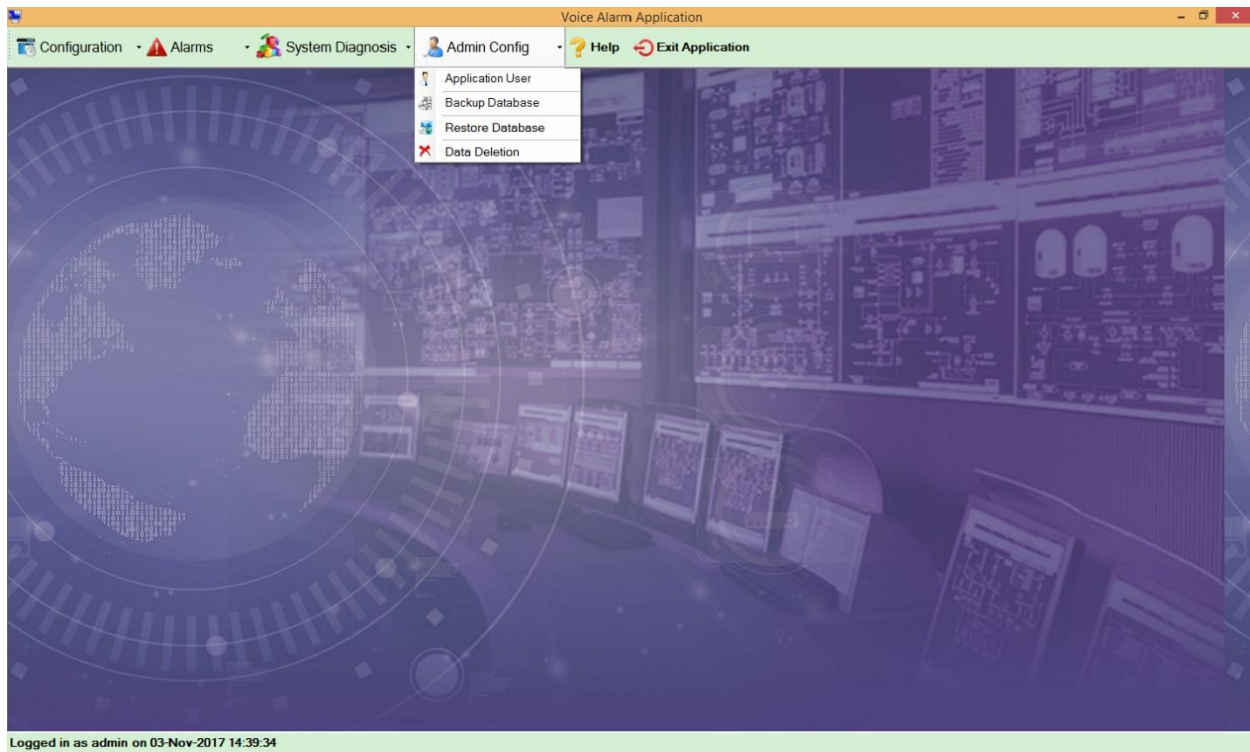


It will display the current service status

1. **Search:** Click on search to search for a text.
2. **Export PDF:** Click on Export PDF to export entire diagnosed data to pdf.
3. **Close:** Click on close to close the screen.

7. Admin Config Menu Items

Click on Admin Config to view its menu items



1. **Application User:** It is used to create a new user.
2. **Backup Database:** It is used to take backup of a database.
3. **Restore Database:** It is used to restore the database.
4. **Data Deletion:** It is used to delete the alarm log data.

1. Application User

Voice Alarm Application

Configuration Alarms System Diagnosis Admin Config Help Exit Application

APPLICATION USER

APPLICATION USER

User Name*

Login Name*

Password*

User Type* ?

Status ☒ Active ☐ NotActive

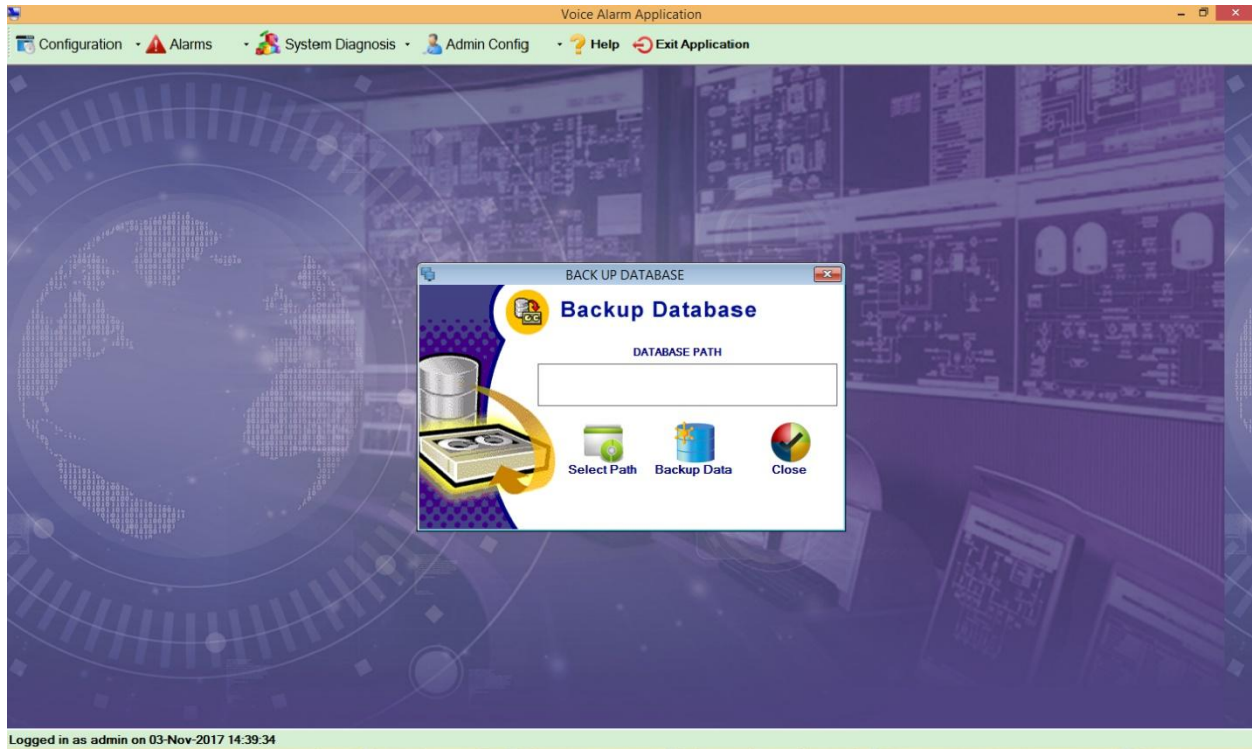
Logged in as admin on 03-Nov-2017 14:39:34

It is used to add a new user or edit or delete the existing user



1. **User Name:** Enter the name of the user.
2. **Login Name:** Enter login name.
3. **Password:** Enter the password.
4. **User Type:** Select the user type from the dropdown as show in above screen: It has two types as shown below:
 - a. Admin
 - b. Operator
5. **Status:** Select the status whether active or not active.

NOTE: ADMIN USER TYPE WILL HAVE COMPLETE ACCESS TO APPLICATION WHILE OPERATOR WILL NOT HAVE ACCESS TO CONFIGURATION AND ADMIN UTILITY

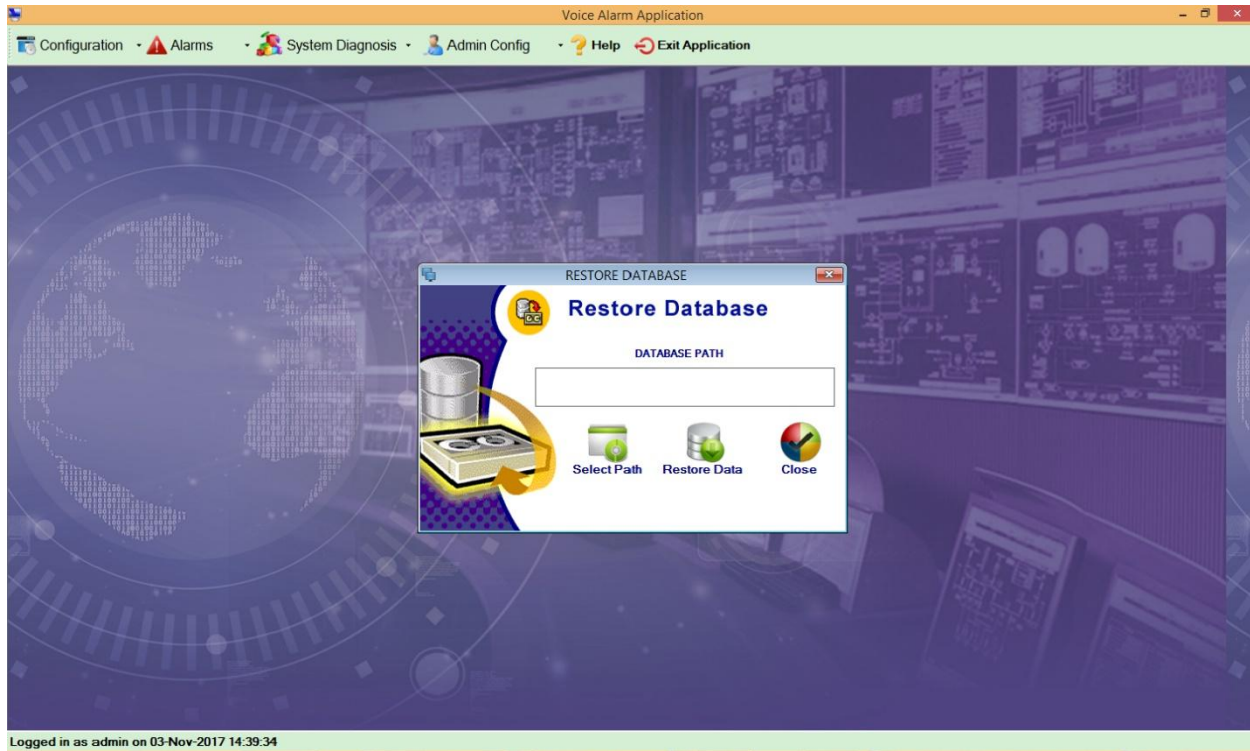
2. Backup Database





It is used to take the database backup

1. **Select Path:** Click on  [Select Path](#) where you want to take database backup.
2. **Backup Data:** Click on  [Backup Data](#) to take the database backup.
3. **Close:** Click on Close to Close the screen.

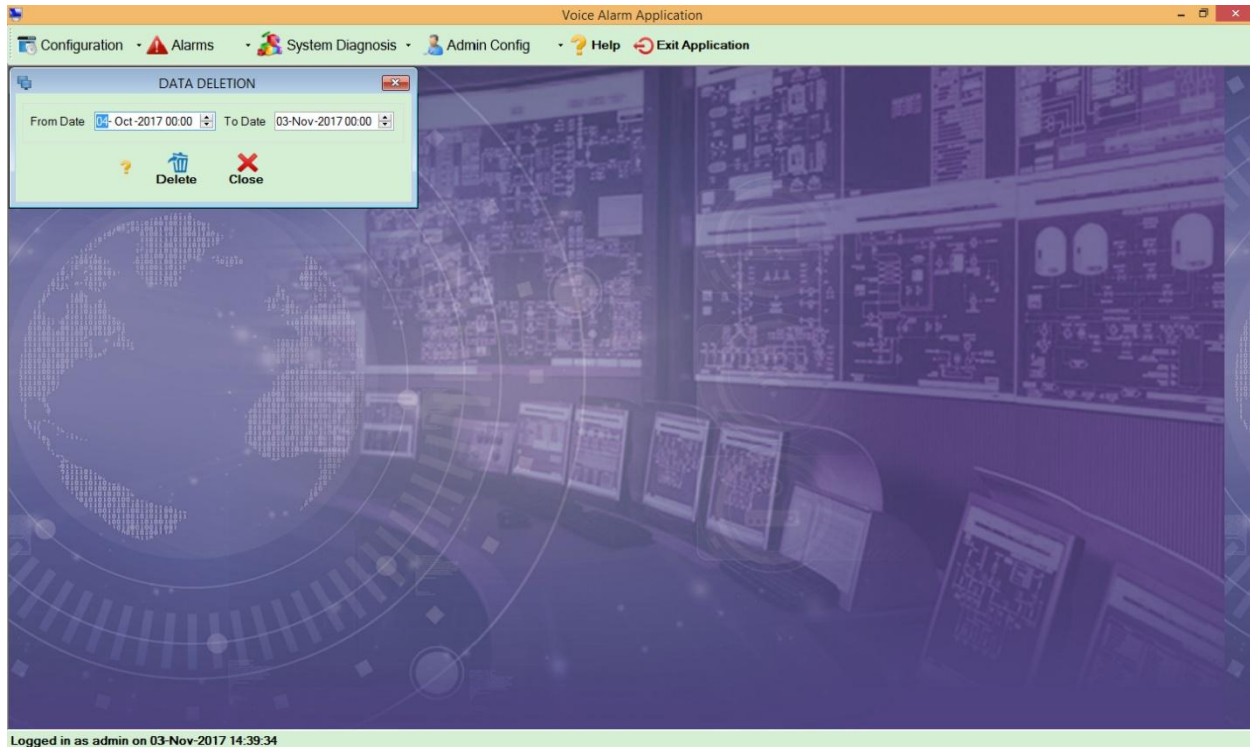
3. Restore Database



It is used to restore the database

1. **Select Path:** Click on  [Select Path](#) from where you want to restore the database.
2. **Backup Data:** Click on  [Restore Data](#) to restore the database.
3. **Close:** Click on Close to Close the screen.

4. Data Deletion



It is used to delete the log data for the selected date

1. **Delete:** Click on delete to delete the data for the selected date & time.
2. **Close:** Click on close to close the screen.

