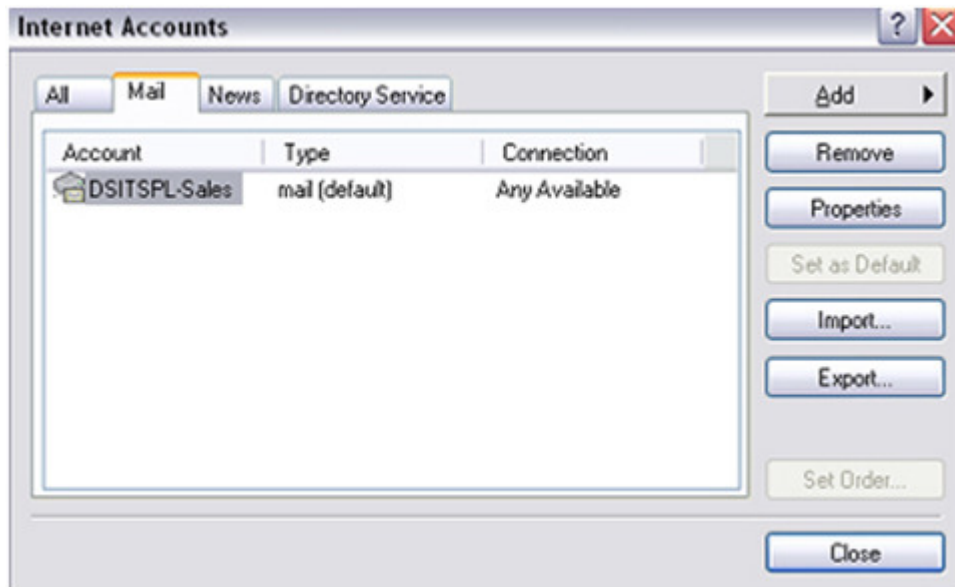
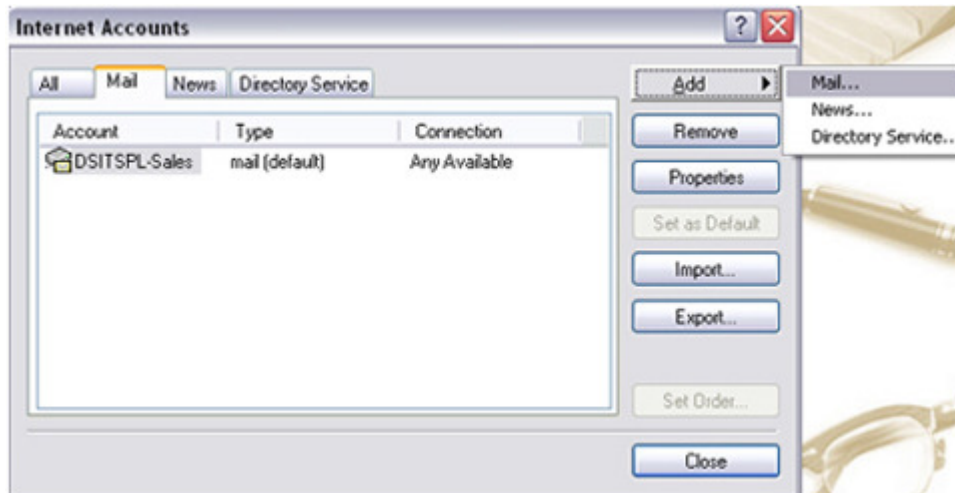


To configure your mail account in Microsoft Outlook Express, you need to follow below mentioned guide lines.



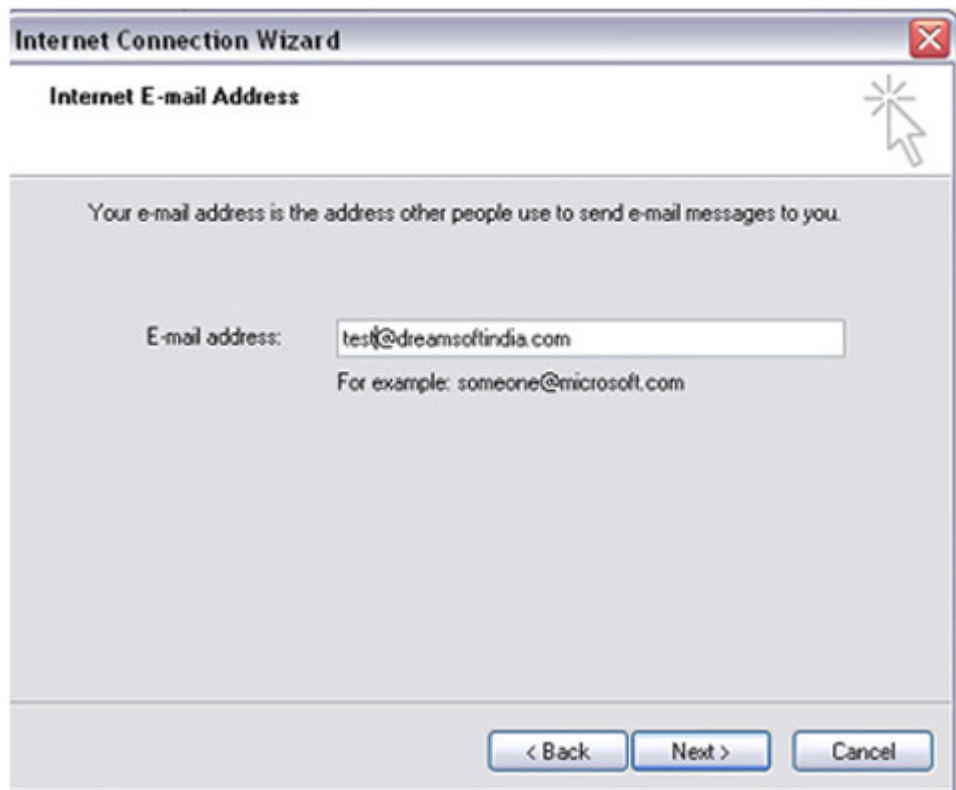
From the Tools menu, select Accounts....The Internet Accounts window appears.Click the Add a New Email Account Optionand select Mail.... The Internet Connection Wizard appears.



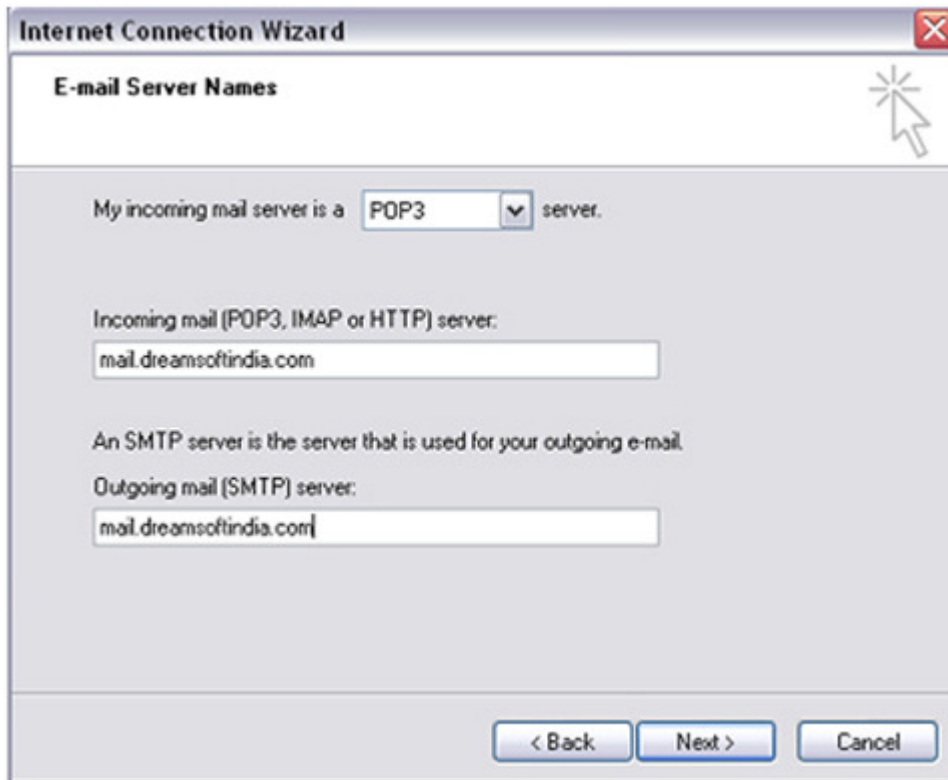
Select Add>Mail.... from the Menu to add new email account.



Enter your Display Name in the Wizard like your name.



Enter your email address....



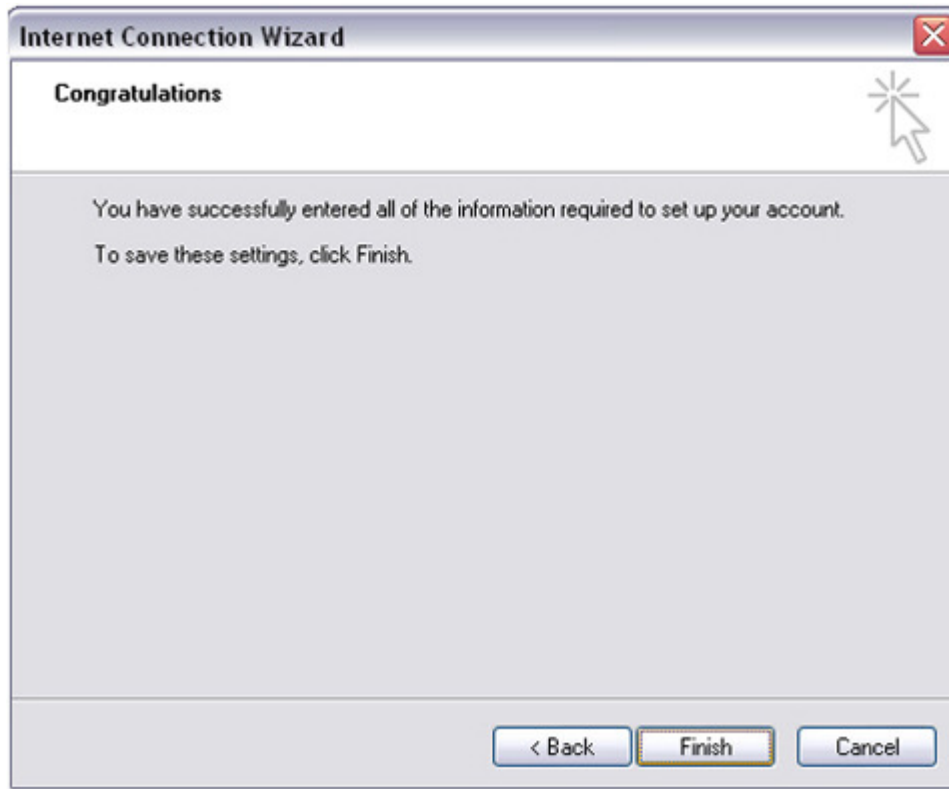
The screenshot shows the 'Internet Connection Wizard' dialog box, specifically the 'E-mail Server Names' step. The window title is 'Internet Connection Wizard' with a close button in the top right corner. The main title of the dialog is 'E-mail Server Names'. Below the title, there is a text field for the incoming mail server type, which is set to 'POP3'. The text reads: 'My incoming mail server is a POP3 server.' Below this, there is a text field for the 'Incoming mail (POP3, IMAP or HTTP) server:' containing the text 'mail.dreamsoftindia.com'. Further down, there is a text field for the 'Outgoing mail (SMTP) server:' also containing 'mail.dreamsoftindia.com'. At the bottom of the dialog, there are three buttons: '< Back', 'Next >', and 'Cancel'.

Enter the incoming and outgoing server settings like mail.domainname.com

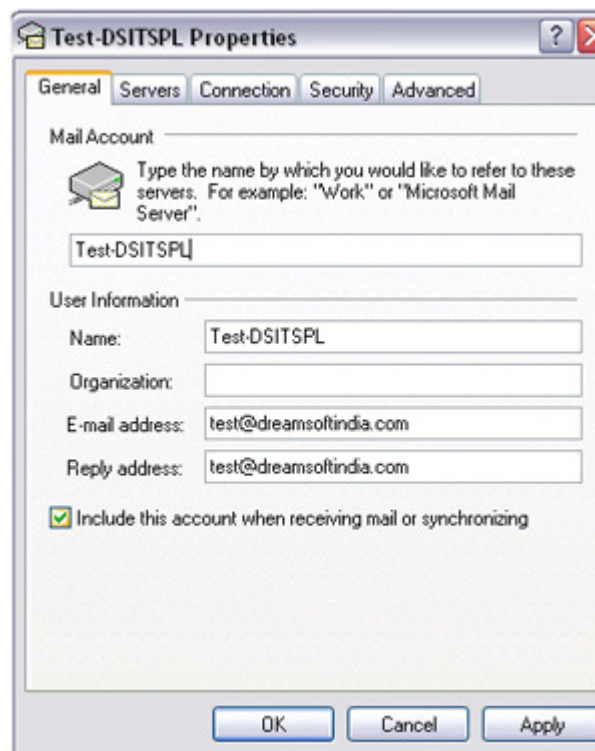


The screenshot shows the 'Internet Connection Wizard' dialog box, specifically the 'Internet Mail Logon' step. The window title is 'Internet Connection Wizard' with a close button in the top right corner. The main title of the dialog is 'Internet Mail Logon'. Below the title, there is a text field for the 'Account name:' containing the text 'test-dreamsoftindia'. Below that is a 'Password:' field with a masked password represented by seven dots. There is a checked checkbox labeled 'Remember password'. Below this, there is a paragraph of text: 'If your Internet service provider requires you to use Secure Password Authentication (SPA) to access your mail account, select the 'Log On Using Secure Password Authentication (SPA)' check box.' Below this text is an unchecked checkbox labeled 'Log on using Secure Password Authentication (SPA)'. At the bottom of the dialog, there are three buttons: '< Back', 'Next >', and 'Cancel'.

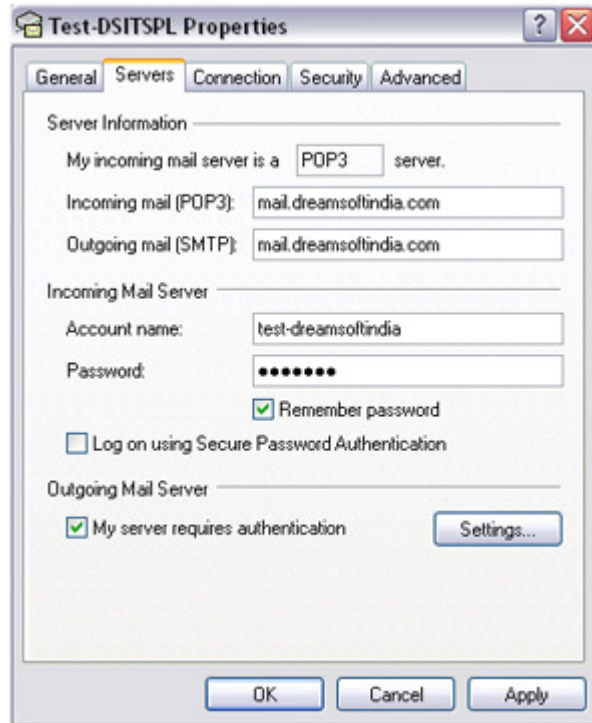
Enter your account name and password and click on Remember Password if you wish to. Dont click on Log on using Secure Password Authentication (SPA).



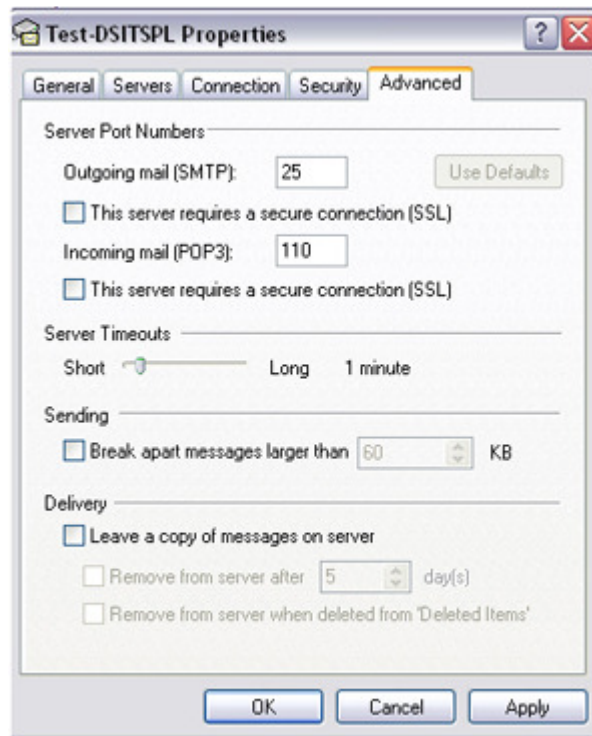
Click on Finish.



Again Click on Tools>Accounts and select Properties of your newly created email account. Fill in the Information in General Tab.



In Server Tab, Click on My Server Requires Authentication.



Check your Advanced Settings also. Finally Click on Apply and OK.